

Washington Timbers Red G00

Washington Timbers

Vancouver, WA

G00 total strength=1178

attack=5.05 defense=2.73

fall league = OPL National Premier League U13

alt names used:

Washington Timbers G00 Red

Washington Timbers FC G00 Red

WASHINGTON TIMBERS FC G00 RED (WA)

WTFC Red G00

Washington Timbers GU 00 Red

WA Timbers G00 Red

Venues played:

Clash At the Border Gold U13

Oswego Nike Cup Gold U13

Mt Hood Challenge GU13 Premier

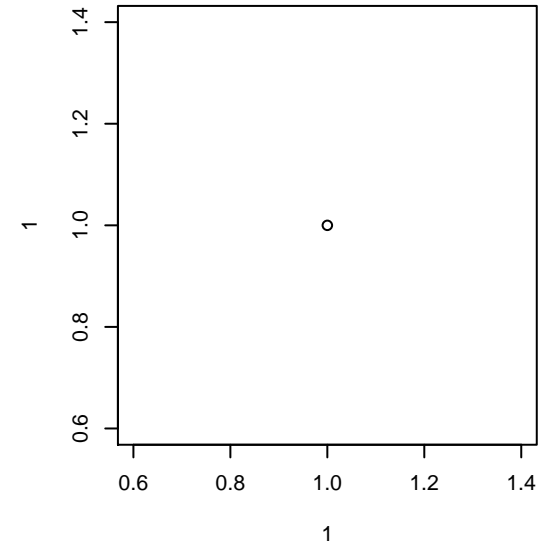
NW Champions League U13

OPL National Premier League U13

Vegas MLK Cup Gold U13

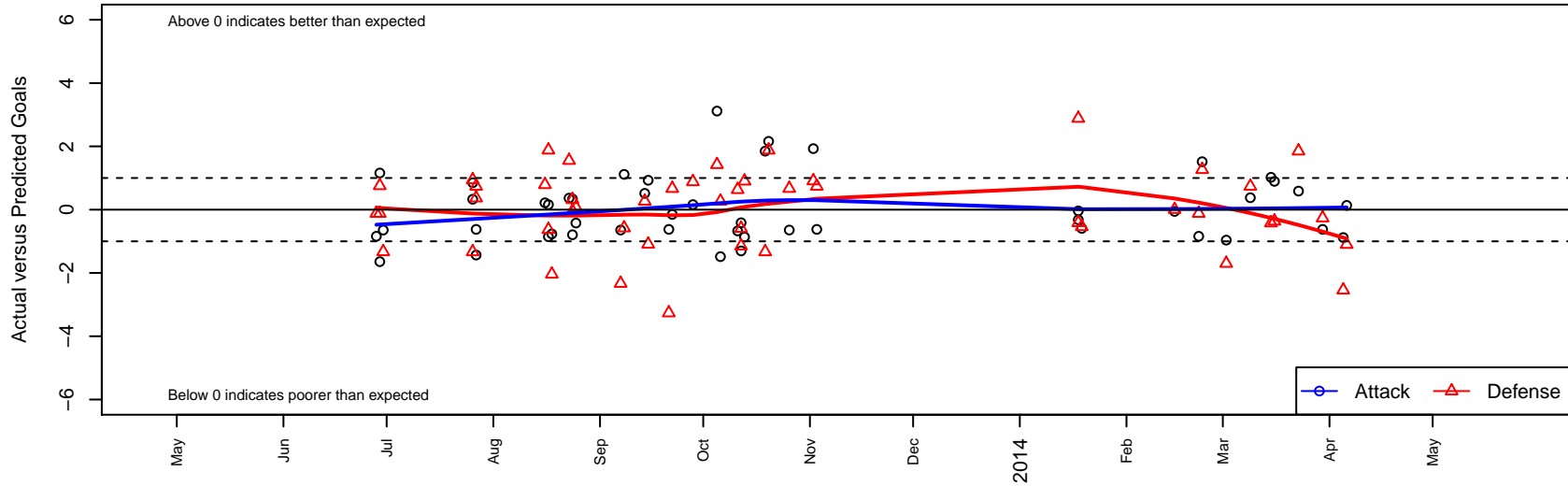
Spr OYS PTT G00 Timbers Premier

WYS Championship G00



Washington Timbers Red G00

Dots are actual minus expected GF (blue circles) and GA (red triangles).
Blue line is smoothed change in attack strength. Red is smoothed change in defense strength.



	date	home		away		venue	pred.home	pred.away
11840	2014-04-06	WPFC Black G00	3	Washington Timbers Red G00	1	WYS Championship G00	1.90	0.87
11802	2014-04-05	Eastside FC White G00	4	Washington Timbers Red G00	0	WYS Championship G00	1.46	0.88
11746	2014-03-30	Washington Timbers Red G00	0	FC Salmon Creek Nemesis Yellow G00	3	WYS Championship G00	0.62	2.74
11708	2014-03-23	Washington Timbers Red G00	1	Crossfire Premier A G00	2	WYS Championship G00	0.41	3.85
11648	2014-03-16	Washington Timbers Red G00	4	Bend FC Timbers Red G00	1	Spr OYS PTT G00 Timbers Premier	3.11	0.64
11612	2014-03-15	Eastside Timbers Black G00	1	Washington Timbers Red G00	5	Spr OYS PTT G00 Timbers Premier	0.58	3.98
11567	2014-03-09	Washington Timbers Red G00	1	FC Salmon Creek Nemesis Yellow G00	2	Spr OYS PTT G00 Timbers Premier	0.62	2.74
11470	2014-03-02	Rogue Valley Timbers Red G00	3	Washington Timbers Red G00	0	Spr OYS PTT G00 Timbers Premier	1.30	0.96
11388	2014-02-23	Washington Timbers Red G00	4	BSC Portland Black I G00	0	Spr OYS PTT G00 Timbers Premier	2.48	1.27
11351	2014-02-22	Westside Timbers Copa TS G00	2	Washington Timbers Red G00	0	Spr OYS PTT G00 Timbers Premier	1.88	0.84
11286	2014-02-15	Washington Timbers Red G00	2	NEU Lyonnais White G00	1	Spr OYS PTT G00 Timbers Premier	2.06	1.01
11151	2014-01-19	Washington Timbers Red G00	0	Pateadores IER G00	3	Vegas MLK Cup Gold U13	0.59	2.46
11130	2014-01-18	Irvine Slammers G00	1	Washington Timbers Red G00	0	Vegas MLK Cup Gold U13	3.88	0.32
11133	2014-01-18	Dallas Texans 01 FTW G00	3	Washington Timbers Red G00	1	Vegas MLK Cup Gold U13	2.59	1.04
10627	2013-11-03	Washington Timbers Red G00	0	FC Salmon Creek Nemesis Yellow G00	2	OPL National Premier League U13	0.62	2.74
10549	2013-11-02	Washington Timbers Red G00	4	Crossfire OR LOSC Blue 1 G00	0	OPL National Premier League U13	2.07	0.91
10380	2013-10-26	Eastside Timbers Red G00	1	Washington Timbers Red G00	0	OPL National Premier League U13	1.67	0.64
10314	2013-10-20	Westside Timbers Copa TS G00	0	Washington Timbers Red G00	3	OPL National Premier League U13	1.88	0.84
10230	2013-10-19	Washington Timbers Red G00	3	THUSC Silver G00	3	OPL National Premier League U13	1.15	1.67
10147	2013-10-13	WPFC Black G00	1	Washington Timbers Red G00	0	NW Champions League U13	1.90	0.87
10045	2013-10-12	Crossfire Premier A G00	5	Washington Timbers Red G00	0	NW Champions League U13	3.85	0.41
10051	2013-10-12	FC Nova Grey G00	3	Washington Timbers Red G00	0	NW Champions League U13	2.41	1.30
9998	2013-10-11	Eastside FC Red G00	2	Washington Timbers Red G00	0	NW Champions League U13	2.63	0.67
9947	2013-10-06	BSC Portland Black I G00	1	Washington Timbers Red G00	1	OPL National Premier League U13	1.27	2.48
9855	2013-10-05	Washington Timbers Red G00	5	FC Portland Navy G00	0	OPL National Premier League U13	1.88	1.42
9682	2013-09-28	Washington Timbers Red G00	1	Westside Timbers Copa TS G00	1	OPL National Premier League U13	0.84	1.88
9606	2013-09-22	THUSC Silver G00	1	Washington Timbers Red G00	1	OPL National Premier League U13	1.67	1.15
9530	2013-09-21	FC Salmon Creek Nemesis Yellow G00	6	Washington Timbers Red G00	0	OPL National Premier League U13	2.74	0.62

	date	home		away		venue	pred.home	pred.away
9440	2013-09-15	Crossfire OR LOSC Blue 1 G00	2	Washington Timbers Red G00	3	OPL National Premier League U13	0.91	2.07
9368	2013-09-14	Washington Timbers Red G00	3	BSC Portland Black I G00	1	OPL National Premier League U13	2.48	1.27
9280	2013-09-08	FC Portland Navy G00	2	Washington Timbers Red G00	3	OPL National Premier League U13	1.42	1.88
9205	2013-09-07	Washington Timbers Red G00	0	Eastside Timbers Red G00	4	OPL National Premier League U13	0.64	1.67
9063	2013-08-25	Washington Timbers Red G00	0	NWN Red G00	2	NW Champions League U13	0.42	2.07
9005	2013-08-24	Washington Timbers Red G00	1	Seattle United Copa G00	3	NW Champions League U13	0.66	2.96
9010	2013-08-24	Washington Timbers Red G00	0	SSC Shadow A G00	2	NW Champions League U13	0.79	2.32
8977	2013-08-23	Washington Timbers Red G00	2	FC Nova Pink G00	0	NW Champions League U13	1.64	1.55
8937	2013-08-18	PacNW Maroon G00	4	Washington Timbers Red G00	0	Mt Hood Challenge GU13 Premier	1.96	0.77
8863	2013-08-17	Washington Timbers Red G00	1	ASE Emerald G00	2	Mt Hood Challenge GU13 Premier	1.86	1.37
8886	2013-08-17	Westside Timbers Copa TS G00	0	Washington Timbers Red G00	1	Mt Hood Challenge GU13 Premier	1.88	0.84
8820	2013-08-16	Utah Avalanche Black G00	0	Washington Timbers Red G00	1	Mt Hood Challenge GU13 Premier	0.79	0.78
8490	2013-07-27	Crossfire OR LOSC Blue 2 G00	0	Washington Timbers Red G00	3	Oswego Nike Cup Gold U13	0.37	4.43
8492	2013-07-27	FC Salmon Creek Nemesis Yellow G00	2	Washington Timbers Red G00	0	Oswego Nike Cup Gold U13	2.74	0.62
8465	2013-07-26	Washington Timbers Red G00	2	THUSC Silver G00	3	Oswego Nike Cup Gold U13	1.15	1.67
8468	2013-07-26	Washington Timbers Red G00	3	Tynecastle FC G00	0	Oswego Nike Cup Gold U13	2.67	0.94
8183	2013-06-30	Washington Timbers Red G00	0	Eastside Timbers Red G00	3	Clash At the Border Gold U13	0.64	1.67
8153	2013-06-29	LWPFC White Piranhas G00	1	Washington Timbers Red G00	0	Clash At the Border Gold U13	1.76	1.64
8155	2013-06-29	Westside Timbers Copa TS G00	2	Washington Timbers Red G00	2	Clash At the Border Gold U13	1.88	0.84
8130	2013-06-28	Washington Timbers Red G00	0	Westside Timbers Copa TS G00	2	Clash At the Border Gold U13	0.84	1.88